

CITYCLIM NEWS



Luxembourg city

PILOTS

The consortium has continued to work on the Pilot service requirements during the last three months. There have been several bilateral and group meetings between the participating pilot city representatives and technical and R&D partners like OHB, Meteologix, ATBand UFZ. OHB-DS has established first data connections to the city of Valencia and the Pilot cities have continued to research the availability of relevant data sources within their departments (e.g., sensor data, historical data, 3d city models, a.s.o.). The quest for existing data sources, however will go on during the next month as often several departments have to be contacted.



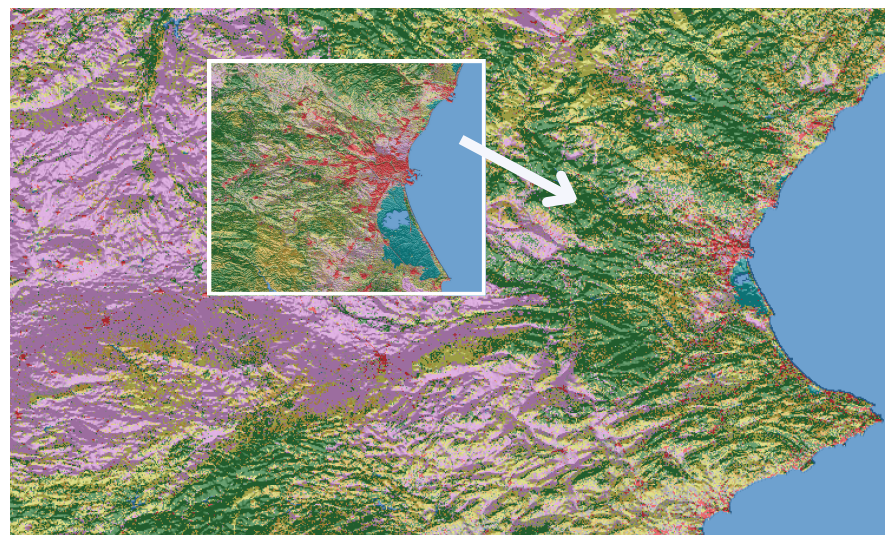
Thessaloniki, Greece

DELIVERABLES

Several reporting documents have been created during the first months of 2022 in order to report the consortium's progress in regard to a functional and technical requirement assessment as well as a state-of-the art update of the currently proposed services and service components (D1.1 - OHB-SYS and ALL PARTNERS), the setup of an initial data management plan (D8.11 - UFZ) , as well as several important ethics requirements regarding the data collection of participant data, storage and informed consent have been provided by partners (D10.1, D10.2, D10.3 - UFZ).

ULTRA HD

The preparations for an initial setup of the existing prototype of the UltraHD are underway for the region around the City of Valencia. Valencia next to the City of Karlsruhe has been able to locate relevant city model data that together with partners from OHB-DS have been already partially provided to MTL to create a high-resolution nest using boundary data from MTL's 1x1km weather model (SuperHD) based on the digital elevation model and land use. The pictures to the right show the planned domains for the SuperHD 1x1 km model that will provide the boundary data for the 100m city model - the 100 m city model UltraHD.



SuperHD model nest and UltraHD model nest region land use.